



Paragon x Watkins Landrace JIC 2011 QTL Plots

The bread wheat landrace NAM (nested association mapping) panel is a panel of bi-parental segregating F4 single-seed populations from crosses of spring wheat accession 'Paragon' with diverse wheat germplasm, particularly from the core set of the AE Watkins landrace collection. Population development and KASP genotyping was conducted within the WISP¹ project. Wheat landraces and varieties were collected from markets from 32 countries across the world. 119 of these accessions have been selected as a diverse core set, which is available from Seed-Stor². A changing set of several NAM populations is grown every year in field trials at JIC. Phenotype data is available from Designing Future Wheat (DFW) WP3 Landraces³. QTL analyses were conducted on resulting phenotype data using R/ql software⁴.

QTL plots on 2011 trials for the following populations are attached:

population name	traits
ParW141	Ht, DTEM, PIGRYLD
ParW209	Ht, DTEM, PIGRYLD
ParW292	Ht, DTEM, PIGRYLD
ParW352	Ht, DTEM, PIGRYLD
ParW468	Ht, DTEM, PIGRYLD
ParW729	Ht, DTEM, PIGRYLD

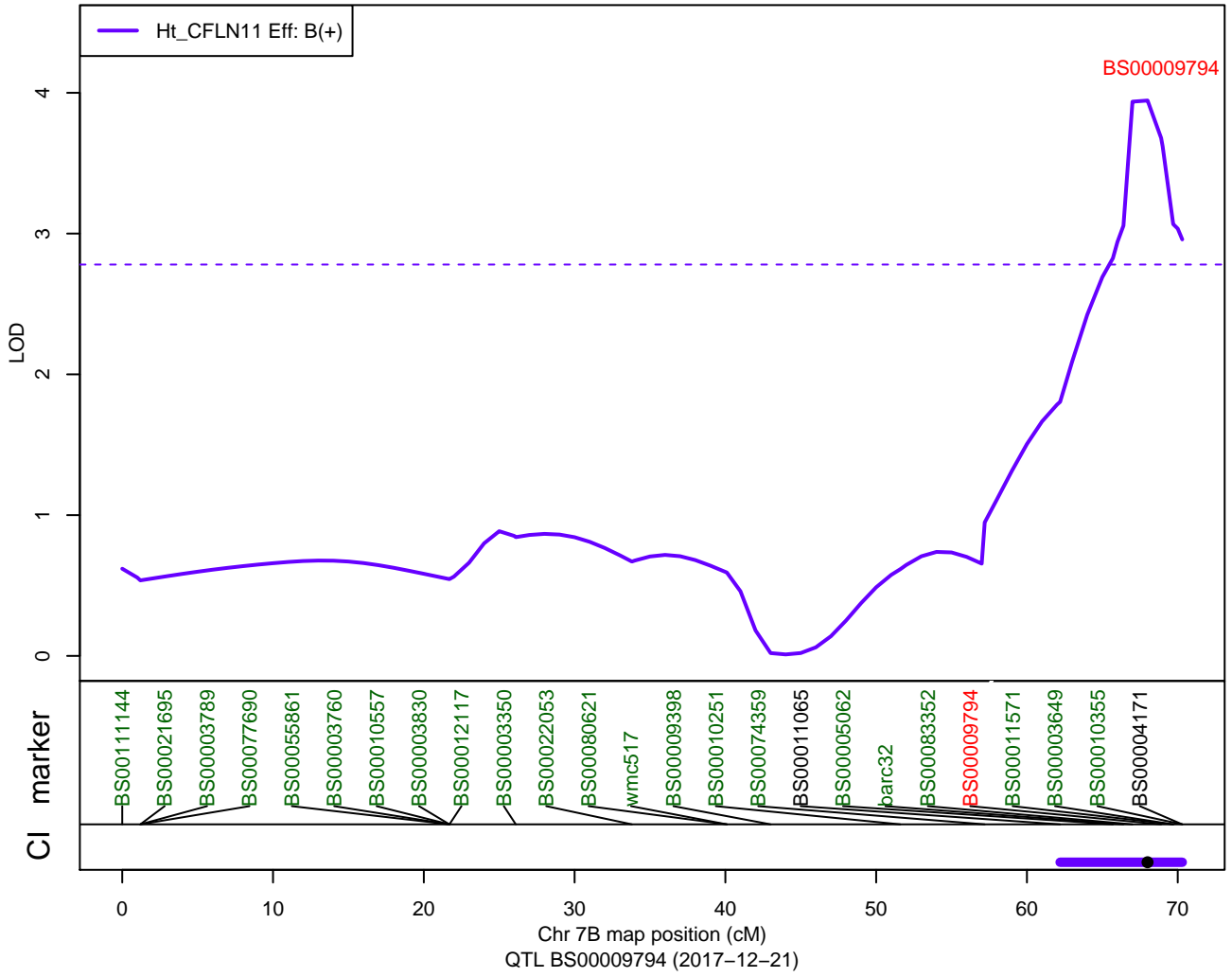
Plot legends: The title names trait, chromosome and population. QTL LOD scores are plotted against the chromosome. Marker names are given at the bottom of the plot. Peak markers are given over the QTL peak. Significance LOD thresholds are indicated as horizontal dotted lines. Abbreviations: DTEM: days to ear emergence after May 1st, Ht: plant height [cm], PIGRYLD: plot grain yield [kg].

Disclaimer: This information cannot be used for publication purposes without permission by Simon Griffiths (simon.griffiths@jic.ac.uk) John Innes Centre, Norwich, NR4 7UH, UK.

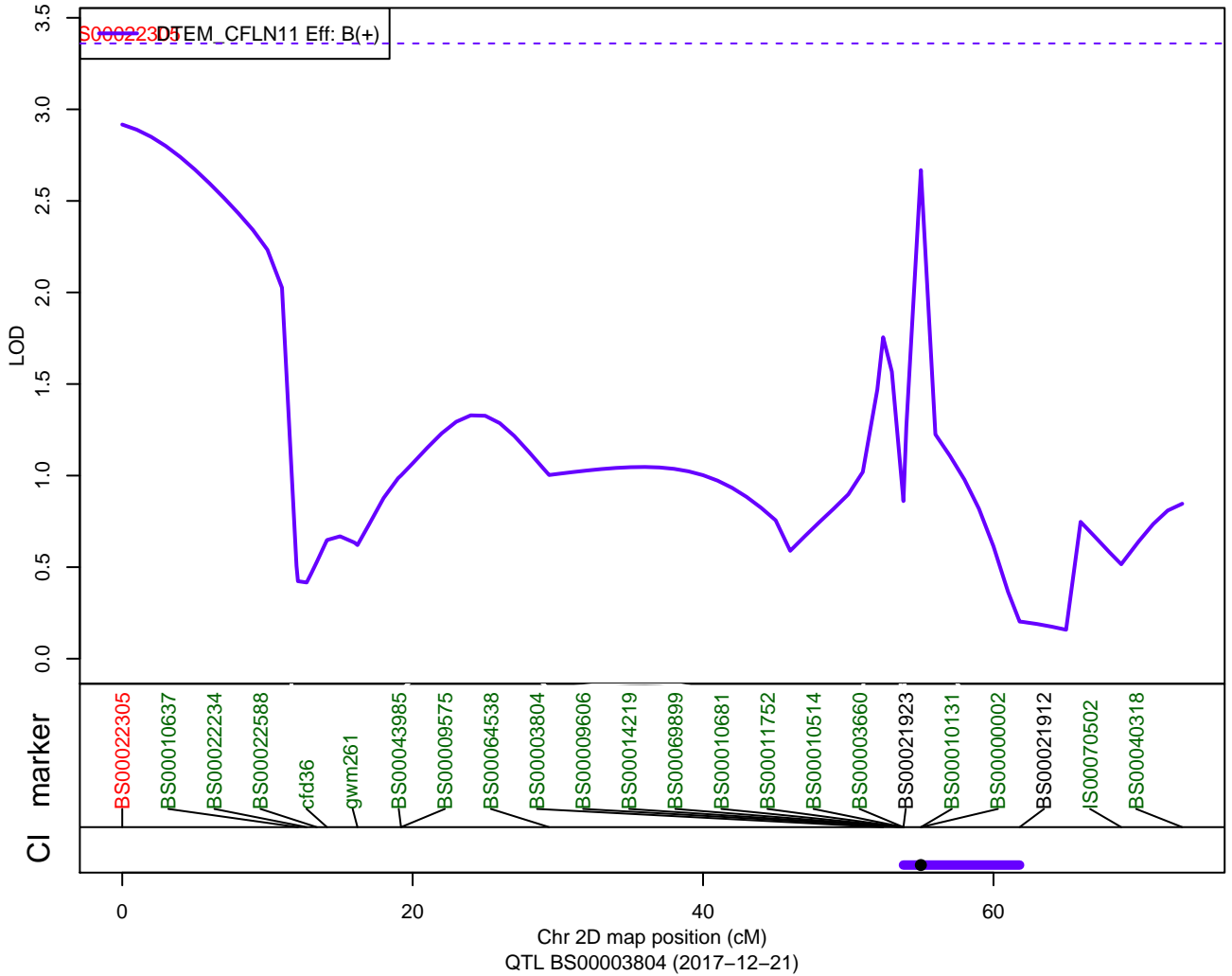
22/01/2018 Luzie Wingen (luzie.wingen@jic.ac.uk)

¹ www.wheatisp.org ² <https://seedstor.ac.uk> ³ <http://wisplandrangepillar.jic.ac.uk/> ⁴ www.rqtl.org

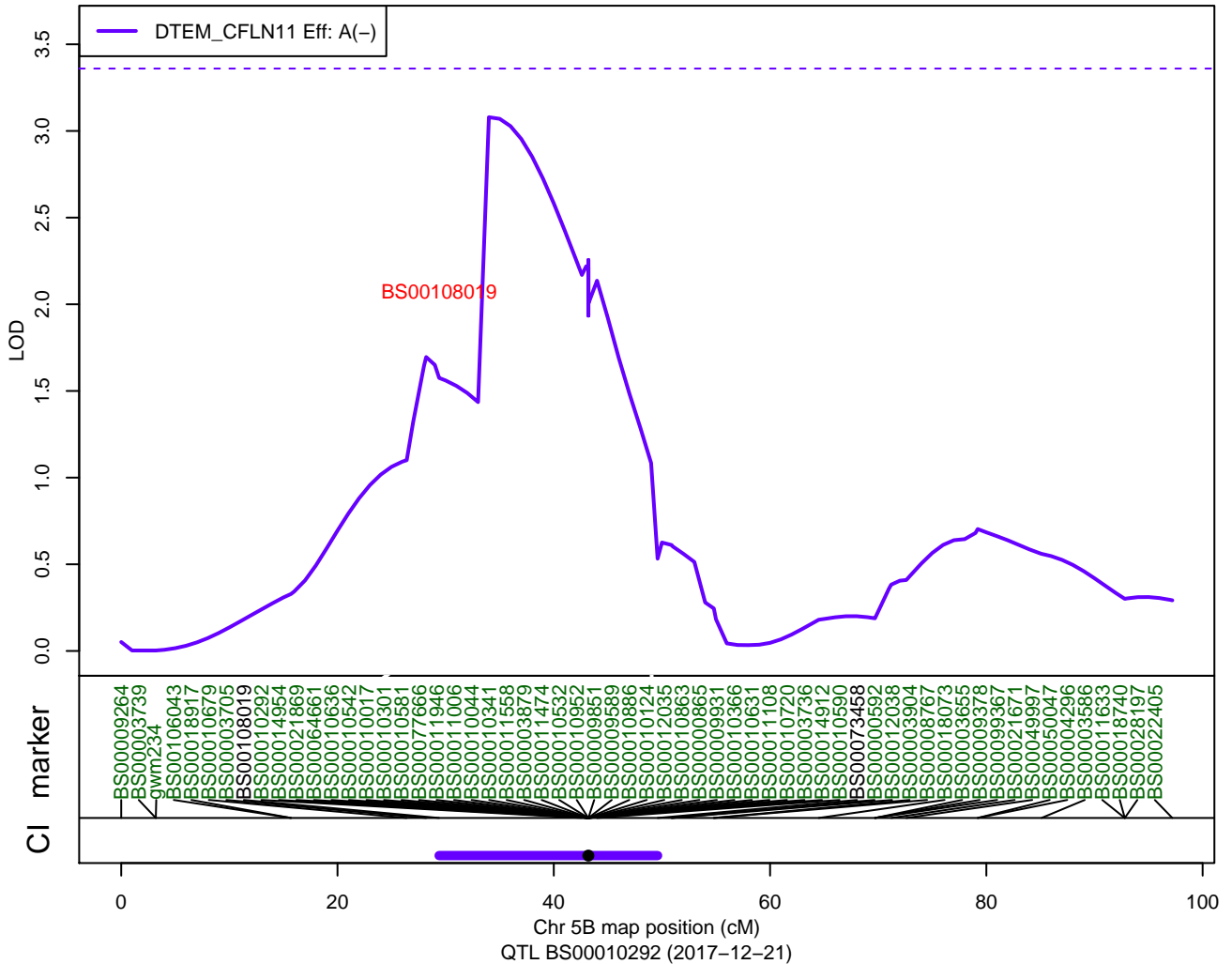
QTLs: ParW141 – Ht – 7B



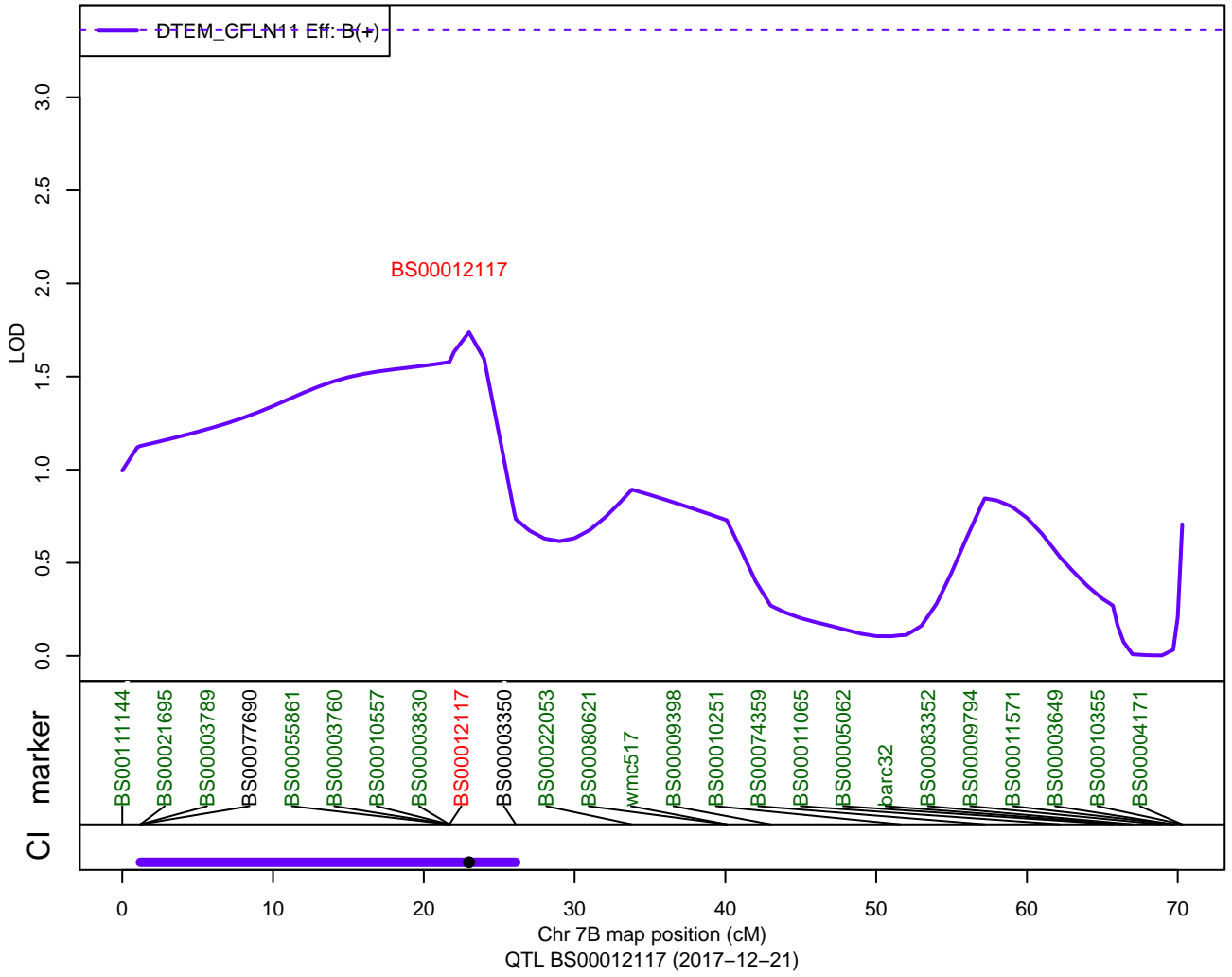
QTLs: ParW141 – DTEM – 2D



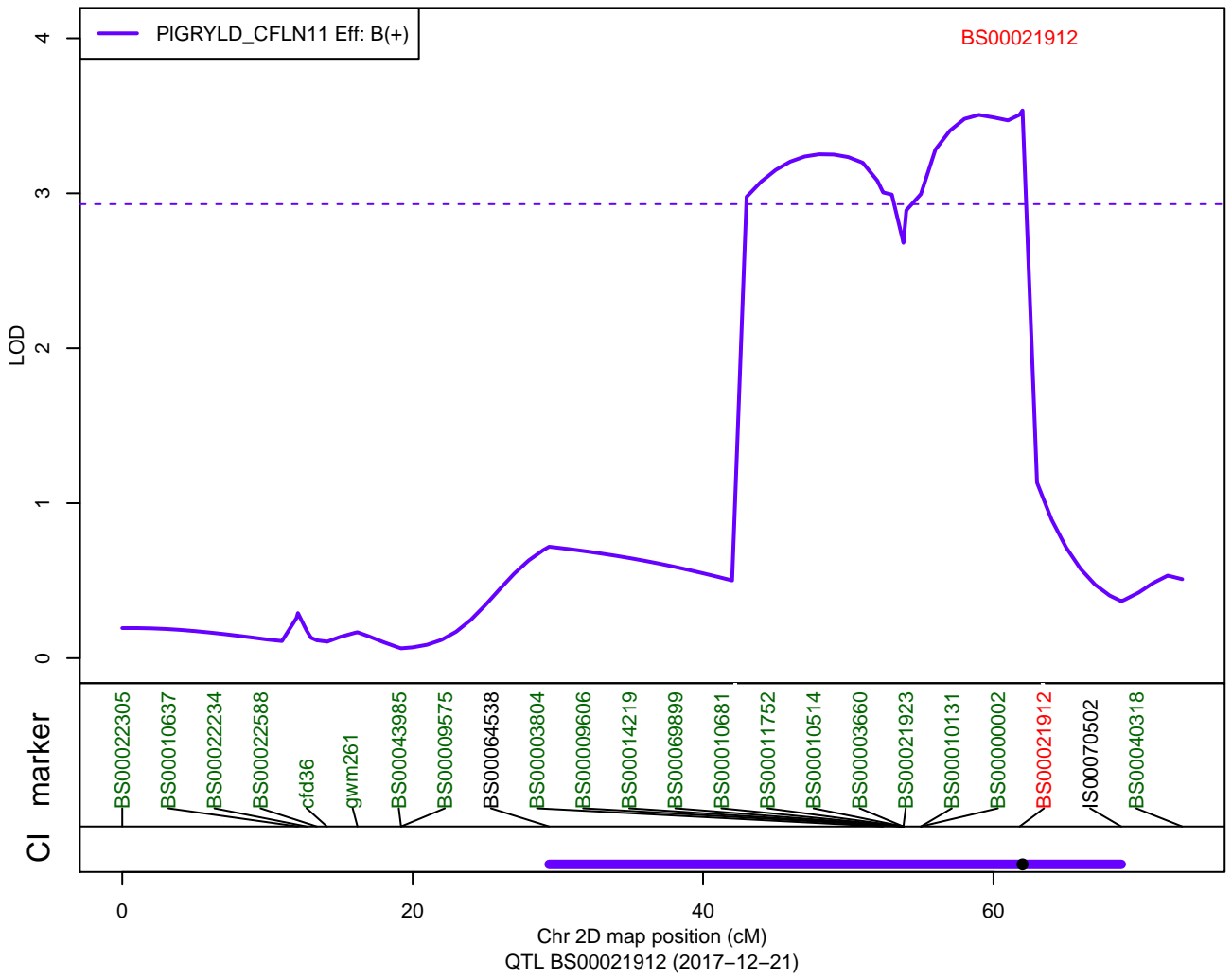
QTLs: ParW141 – DTEM – 5B



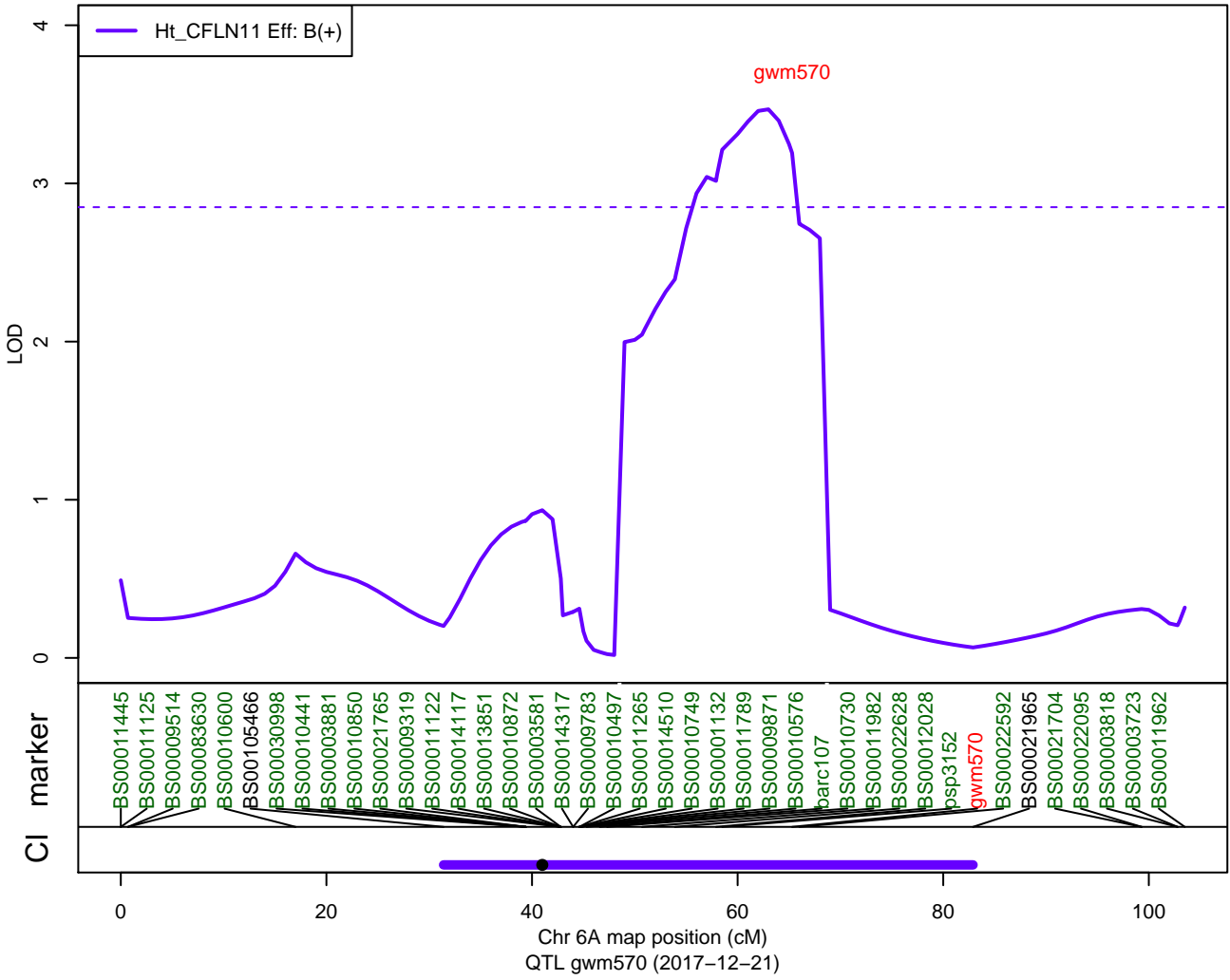
QTLs: ParW141 - DTEM - 7B



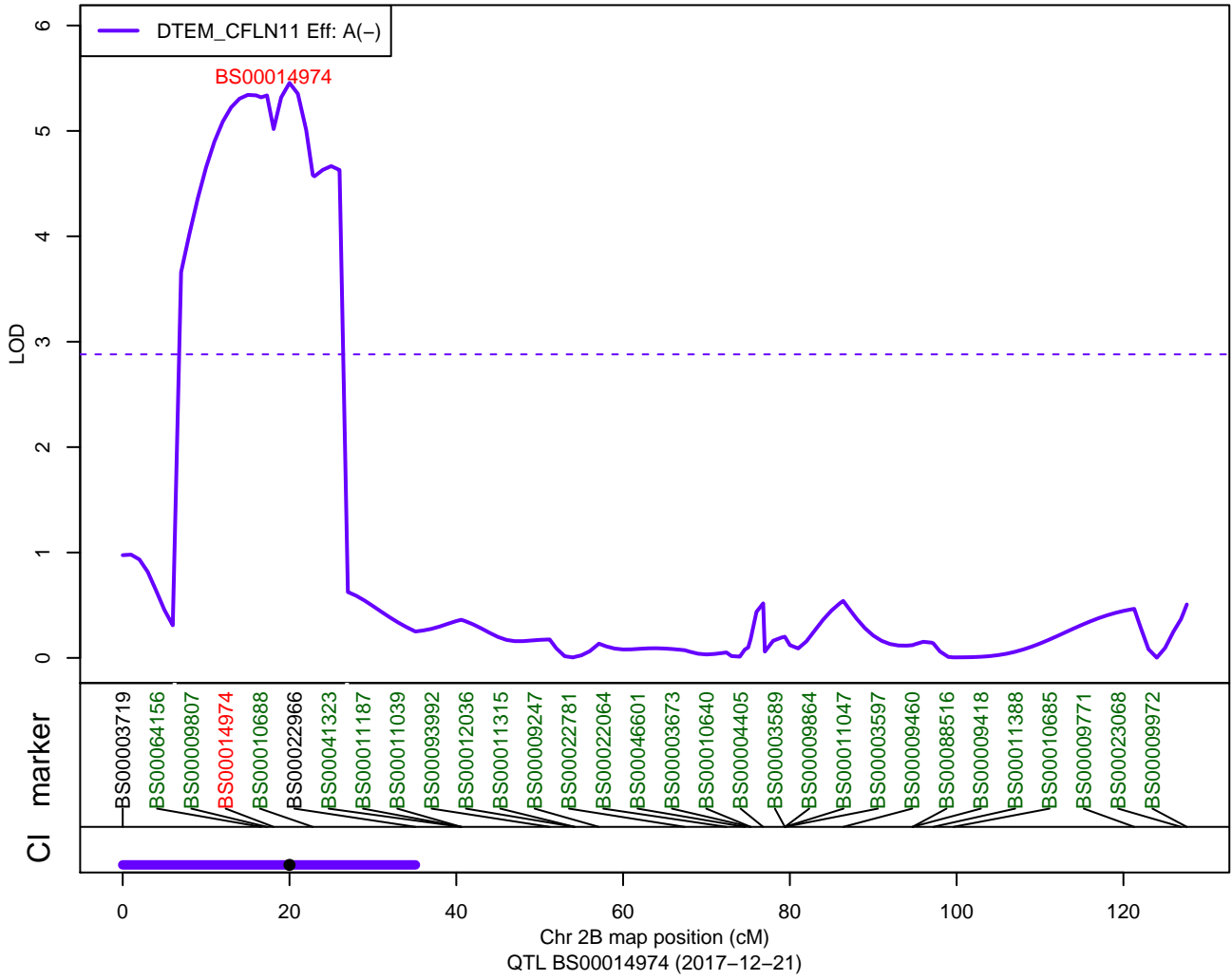
QTLs: ParW141 - PIGRYLD - 2D



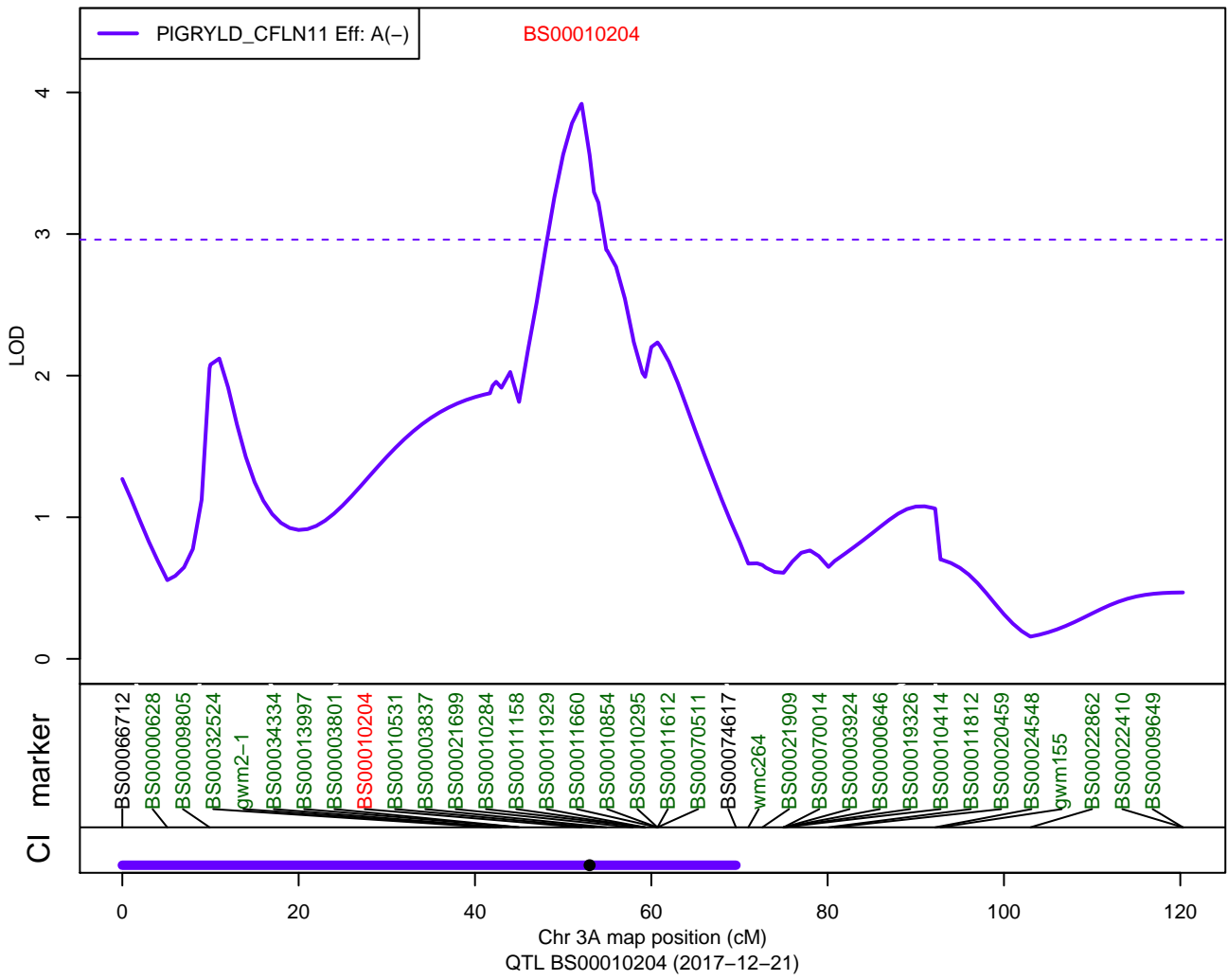
QTLs: ParW209 – Ht – 6A



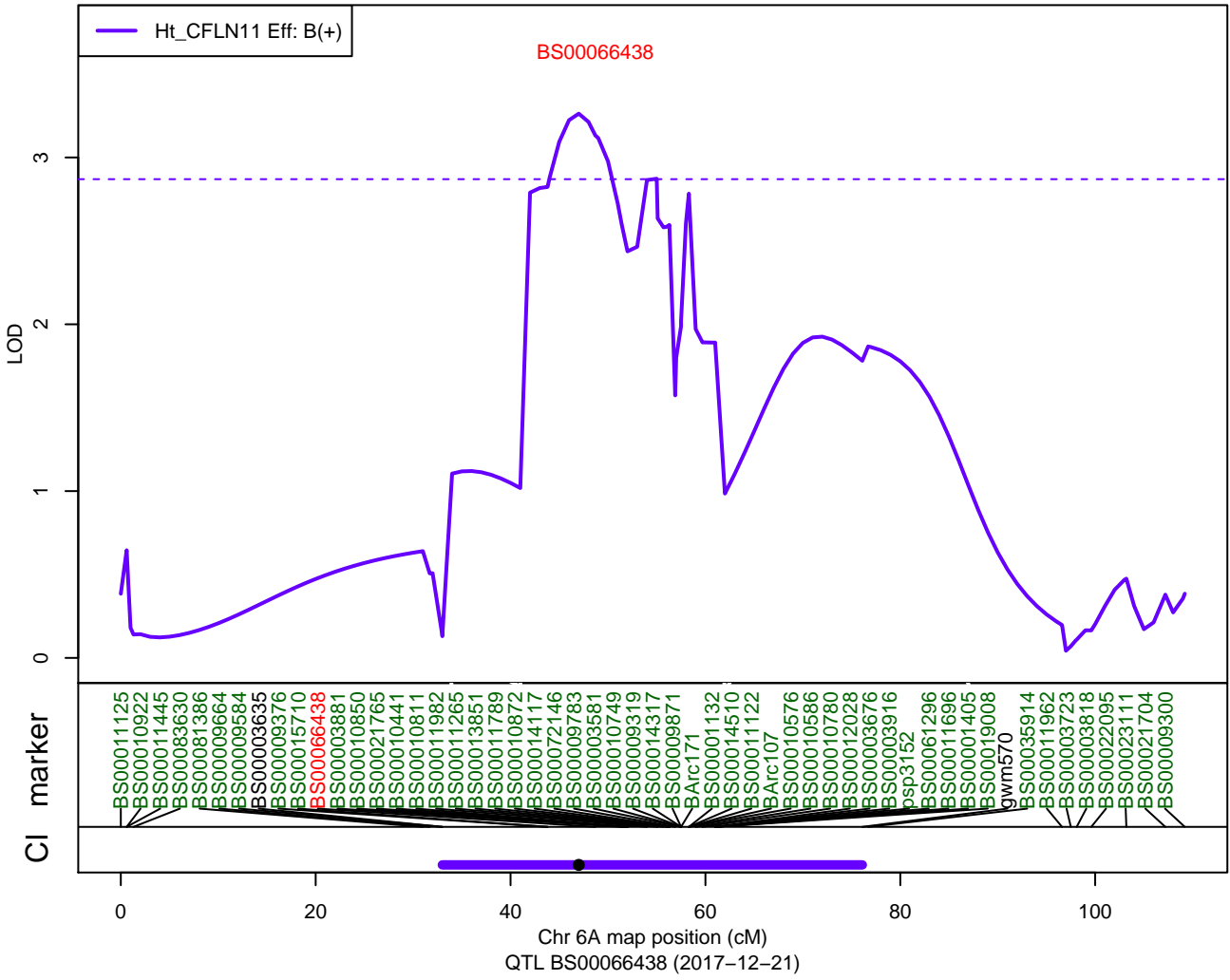
QTLs: ParW209 – DTEM – 2B



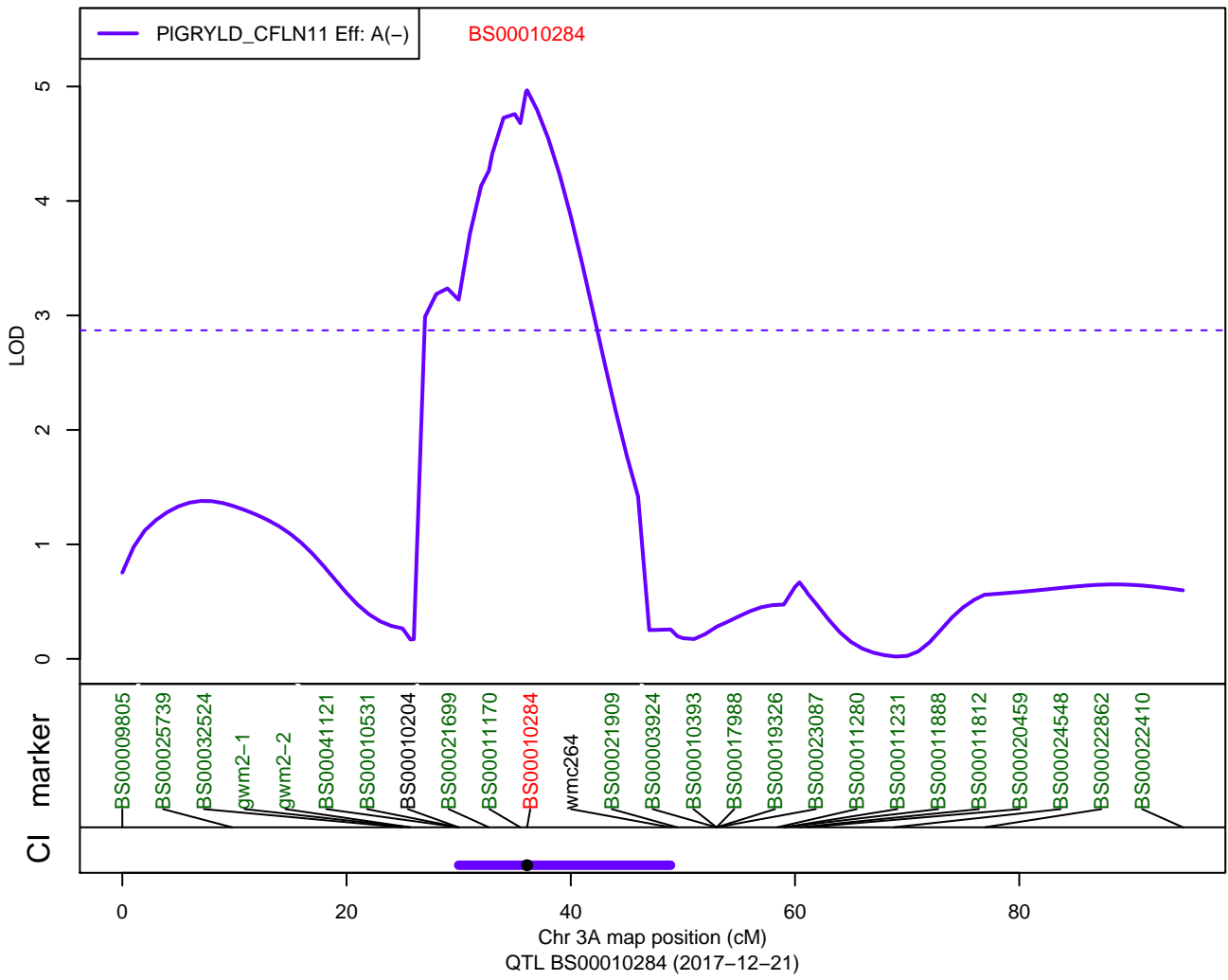
QTLs: ParW209 – PIGRYLD – 3A



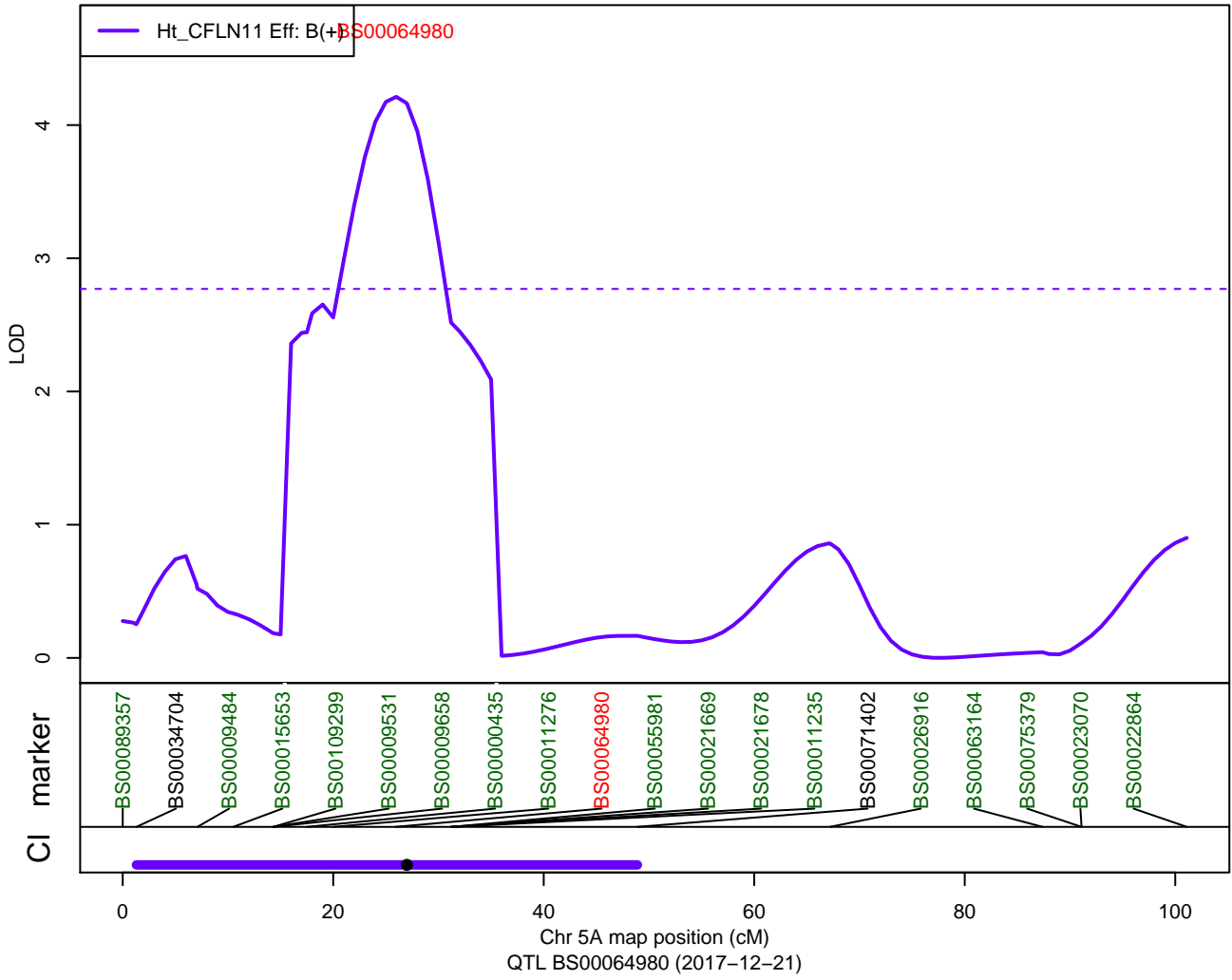
QTLs: ParW292 - Ht - 6A



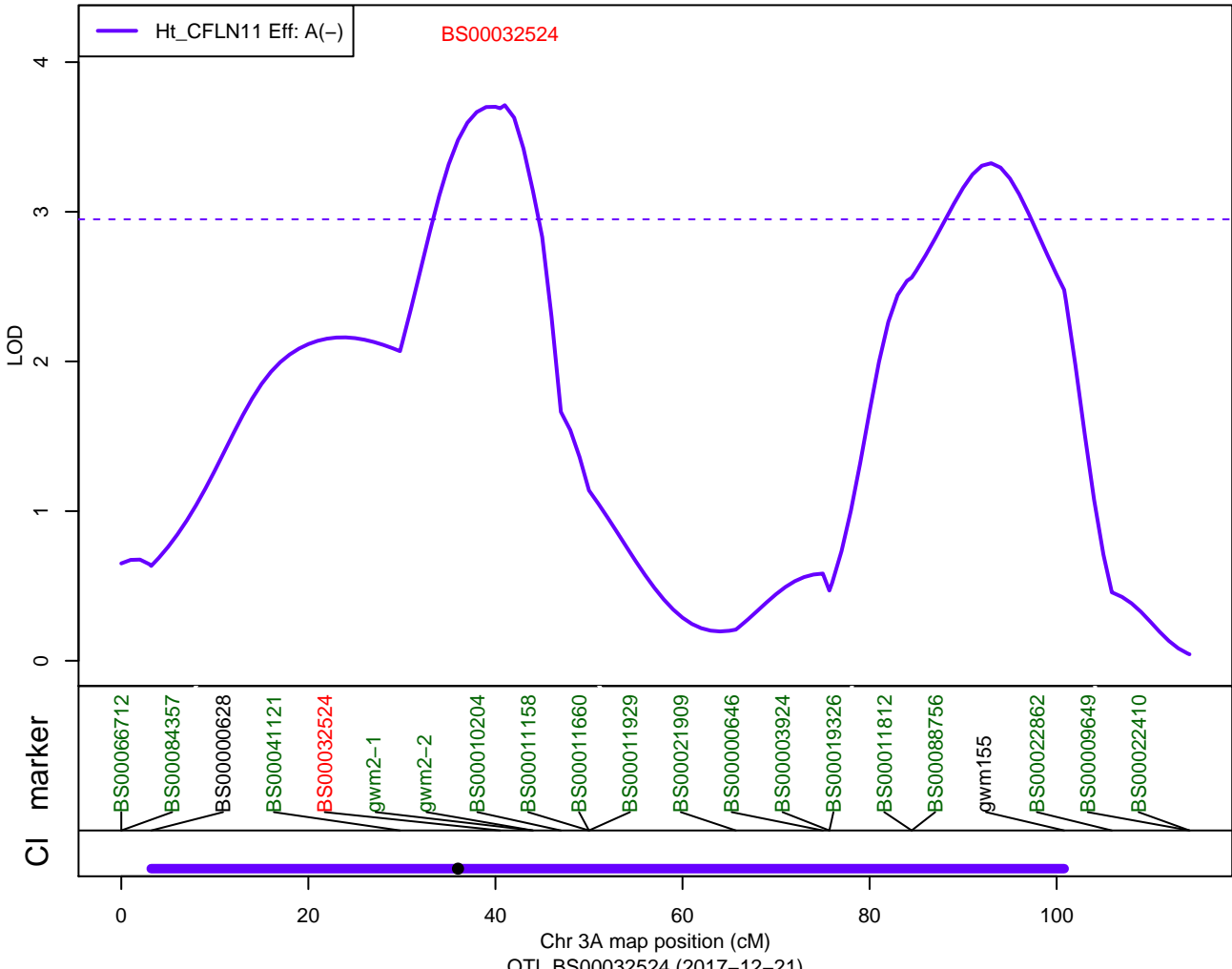
QTLs: ParW292 – PIGRYLD – 3A



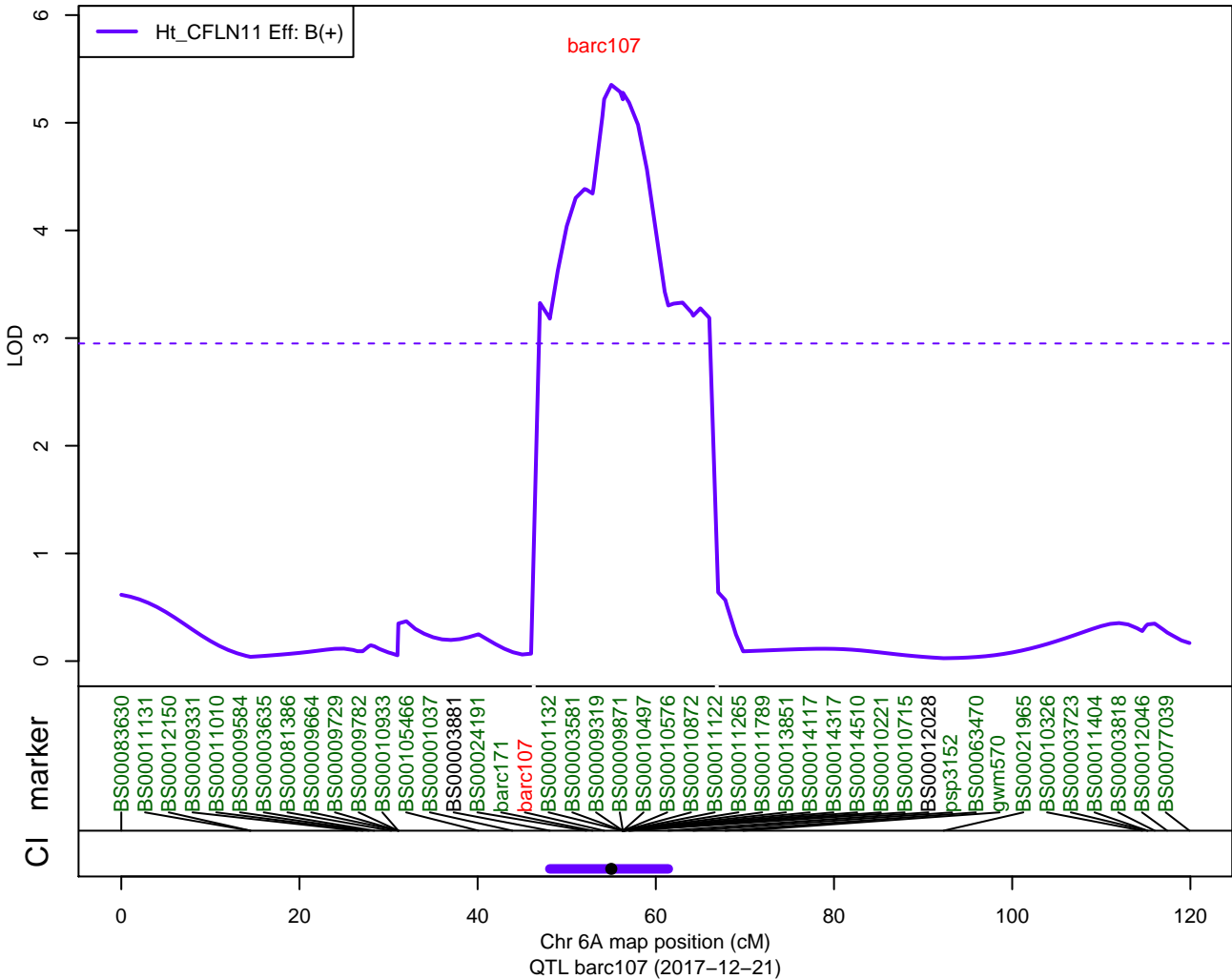
QTLs: ParW352 - Ht - 5A



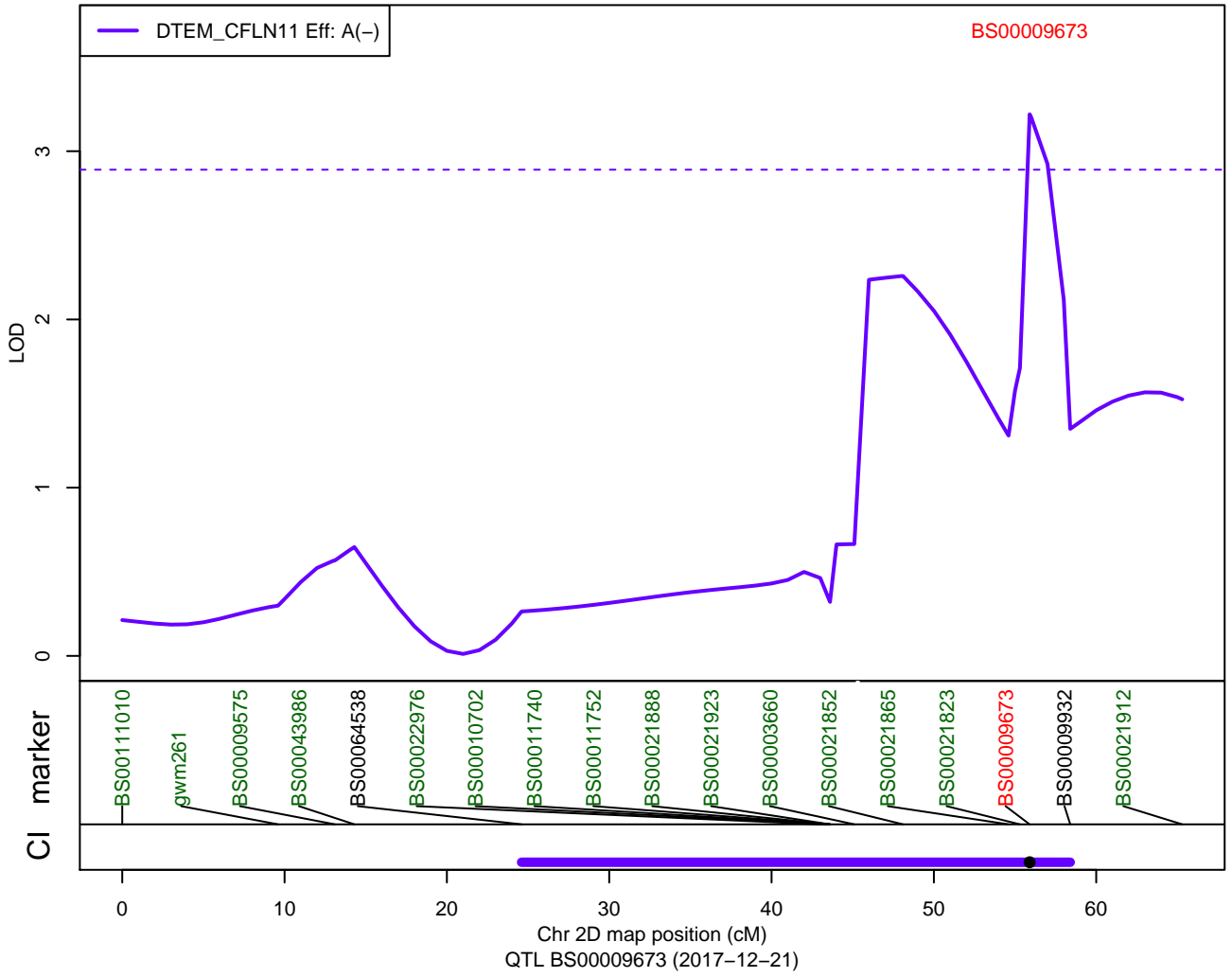
QTLs: ParW468 – Ht – 3A



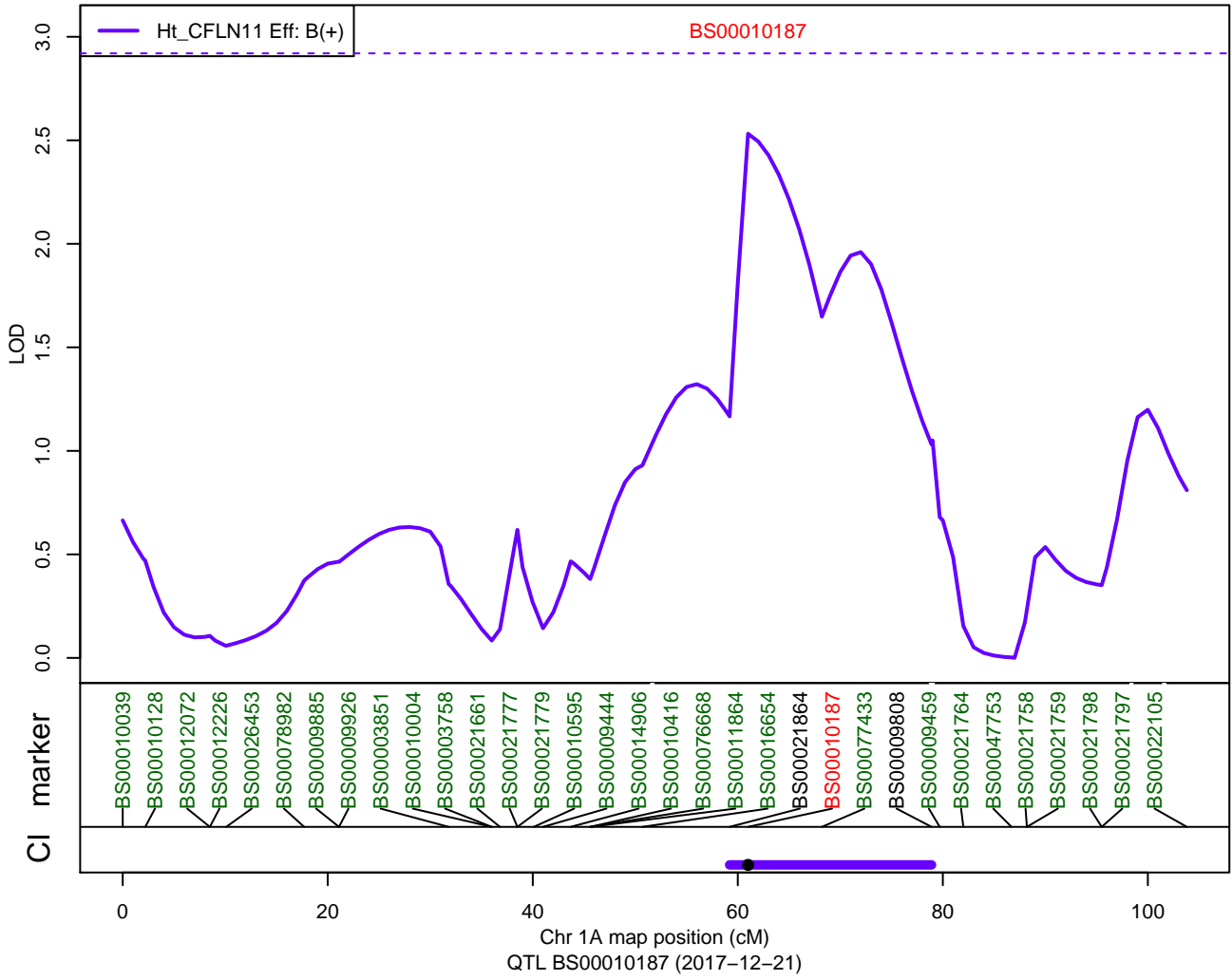
QTLs: ParW468 – Ht – 6A



QTLs: ParW468 – DTEM – 2D



QTLs: ParW729 - Ht - 1A



QTLs: ParW729 - DTEM - 5A

